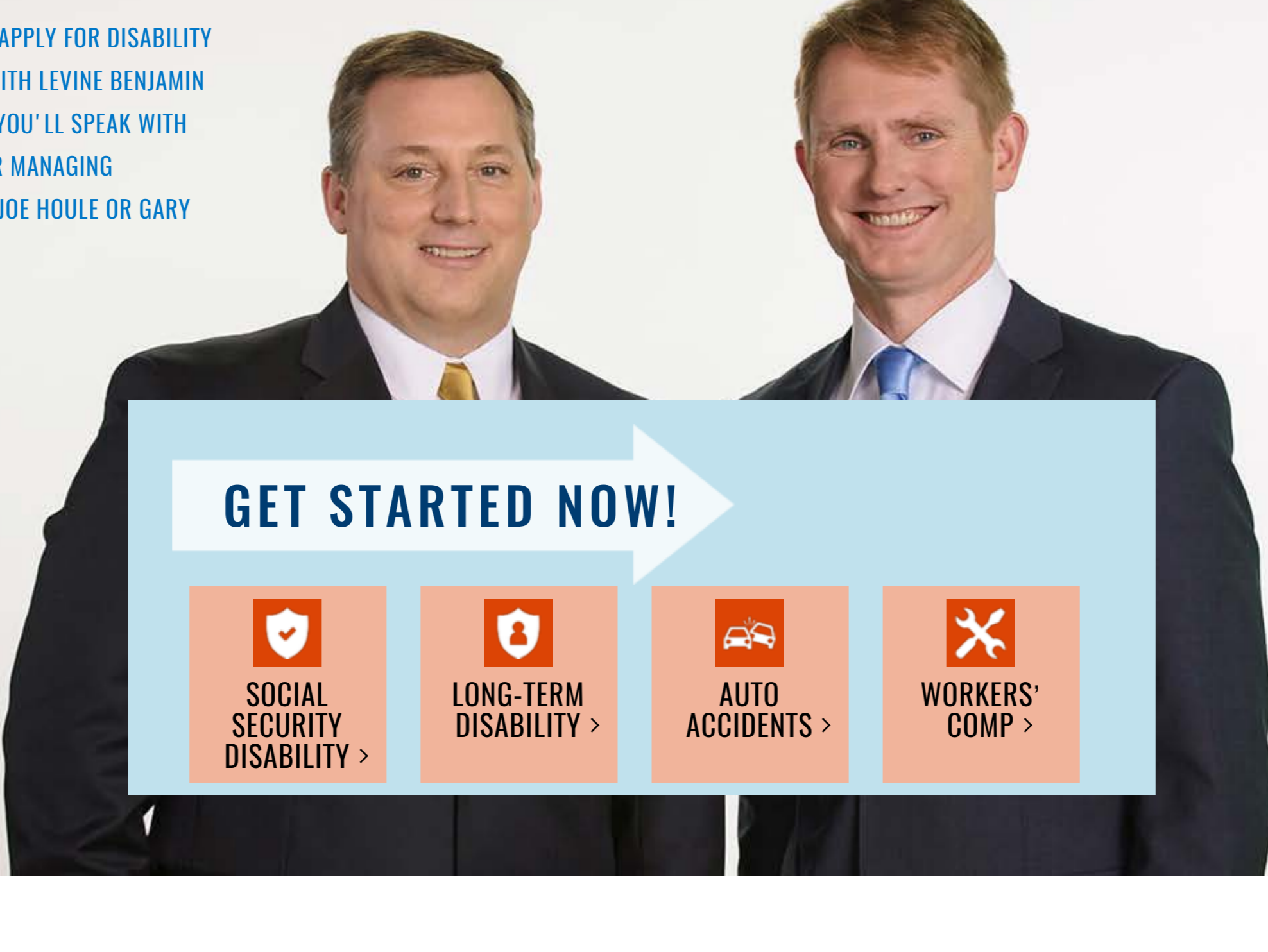


WHEN YOU APPLY FOR DISABILITY BENEFITS WITH LEVINE BENJAMIN LAW FIRM, YOU'LL SPEAK WITH ONE OF OUR MANAGING PARTNERS, JOE HOULE OR GARY BIMBERG.



GET STARTED NOW!

SOCIAL SECURITY DISABILITY >

LONG-TERM DISABILITY >

AUTO ACCIDENTS >

WORKERS' COMP >

TALK TO A LAWYER

Name*

Zip*

Age*

Email*

Phone*

GET HELP NOW >

Social Security Disability Lawyers in Detroit, Michigan

First you get hit with a health crisis. That triggers a money crisis. Your medical bills are out of control. Your family's future is on the line.

You shouldn't be left to struggle alone.

If medical problems mean you can't work, the Michigan disability attorneys at Levine Benjamin Law Firm understand what you're going through. Health problems touch every family, including our own.

With the right benefits or settlements — Social Security Disability, long-term disability, personal injury and workers' compensation — you can find balance in your life again.

Since 1964, Levine Benjamin Law Firm has been proud to help families coping with health and financial worries in Detroit, Toledo, Flint, Lansing, Grand Rapids and all across Michigan.

From applying to appealing, we help you every step of the way.

WHAT WOULD YOU LIKE TO DO?

CALL TO GET STARTED >

GET HELP WITH YOUR APPLICATION >

HOW OUR MICHIGAN SOCIAL SECURITY LAWYERS ARE DIFFERENT

When we say "every step of the way," we mean it.

Most Social Security Disability law firms don't help when you're first applying for benefits. They tell you to file the application yourself and call them back when you're denied.

We help from that first step — all the way to a federal court appeal if needed.

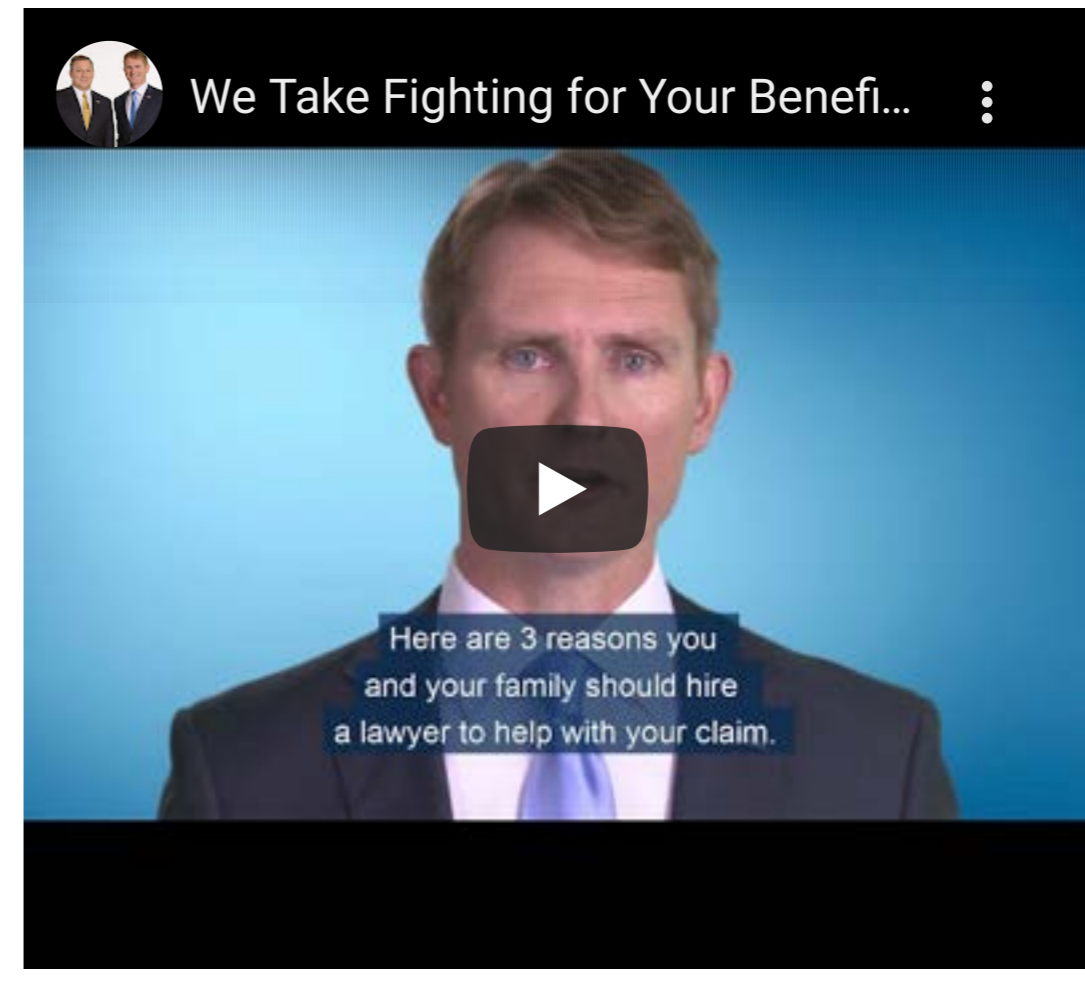
Putting together an application takes a lot of work: Preparing medical records and job records, then filling out lengthy forms. Getting it right can make all the difference to your case.

The Michigan disability lawyers at Levine Benjamin want to **maximize your chances of winning benefits** from the very beginning.

Using this approach, we've helped more than 50,000 people win benefits since 1964.

We bring the same values — putting you in the best position for success — whether your claim is for Social Security Disability, long-term disability, an auto accident, another kind of personal injury, or workers' compensation.

CONTACT US TODAY! >



LAWYERS FOR WORKING PEOPLE

READ TRANSCRIPT >

WHICH BENEFITS DO YOU NEED?

When you're hurt or sick and it's disrupting your livelihood and finances, you might have more than one case for benefits.

Calling on our four different practice areas, at the Levine Benjamin Michigan disability law firm, we look for **every type of disability or injury income** available to you.

We know this isn't just about money — It's about winning back your independence.

You can start by getting a **free evaluation** of your situation.

TO LEARN MORE, CLICK THE PLUS SIGNS ON THE RIGHT.

SOCIAL SECURITY DISABILITY

When you need Social Security Disability benefits, Levine Benjamin helps you at every step, starting with your first application.

LEARN MORE >

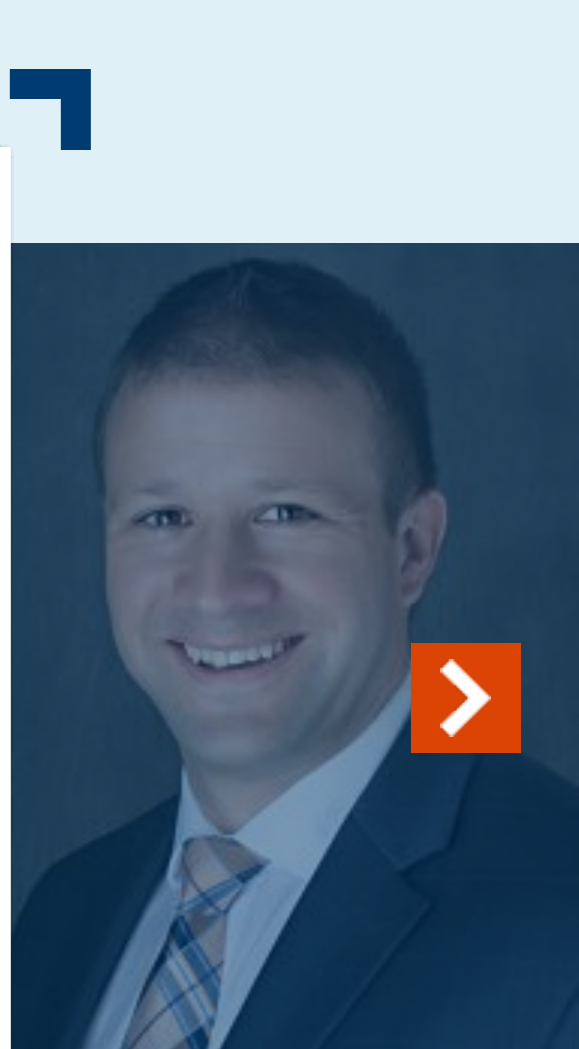
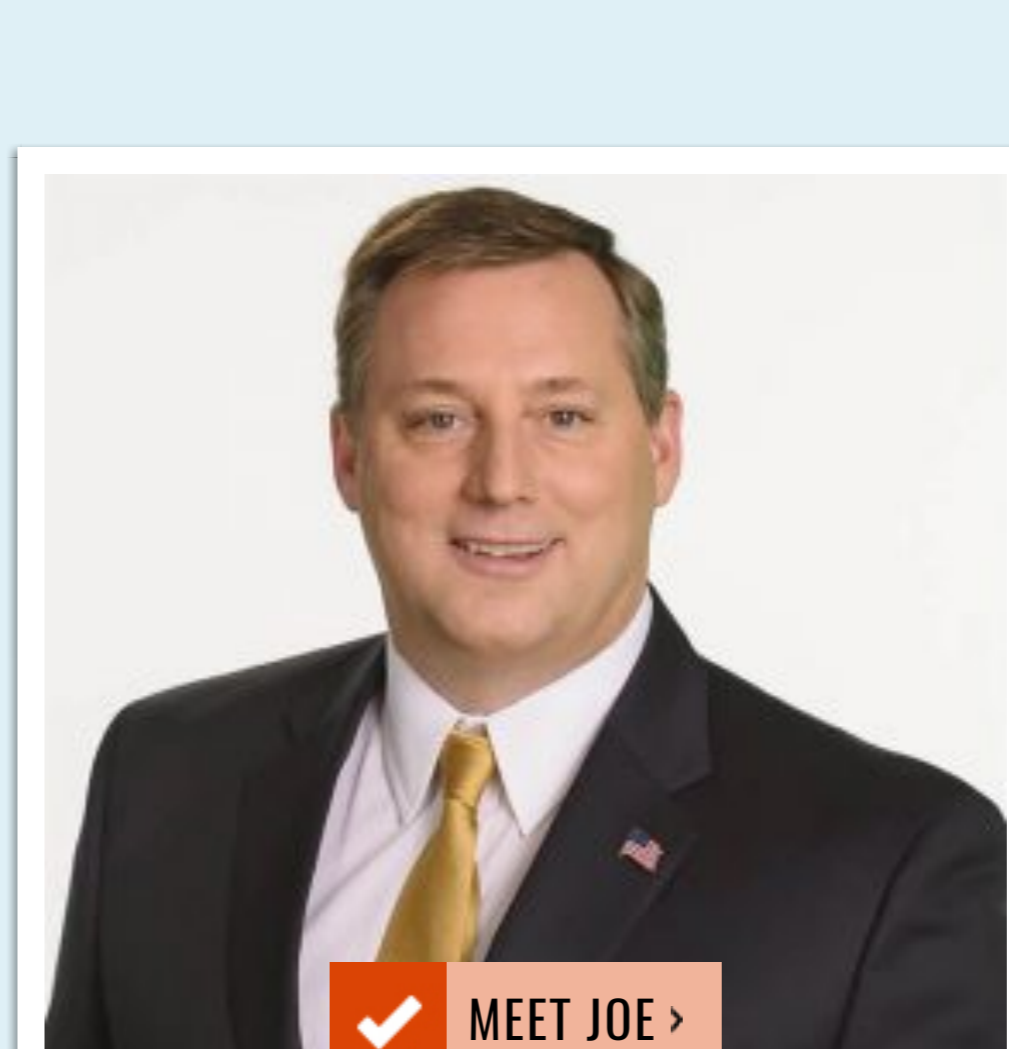
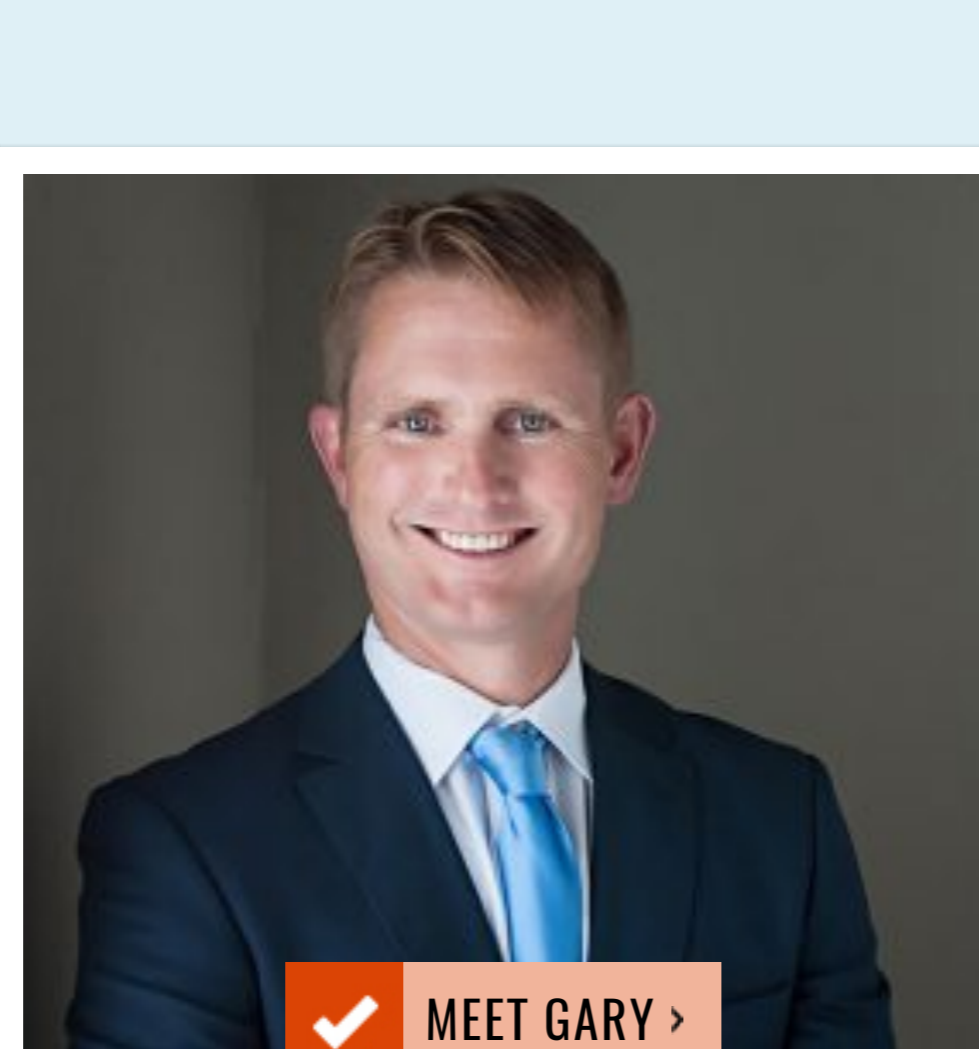
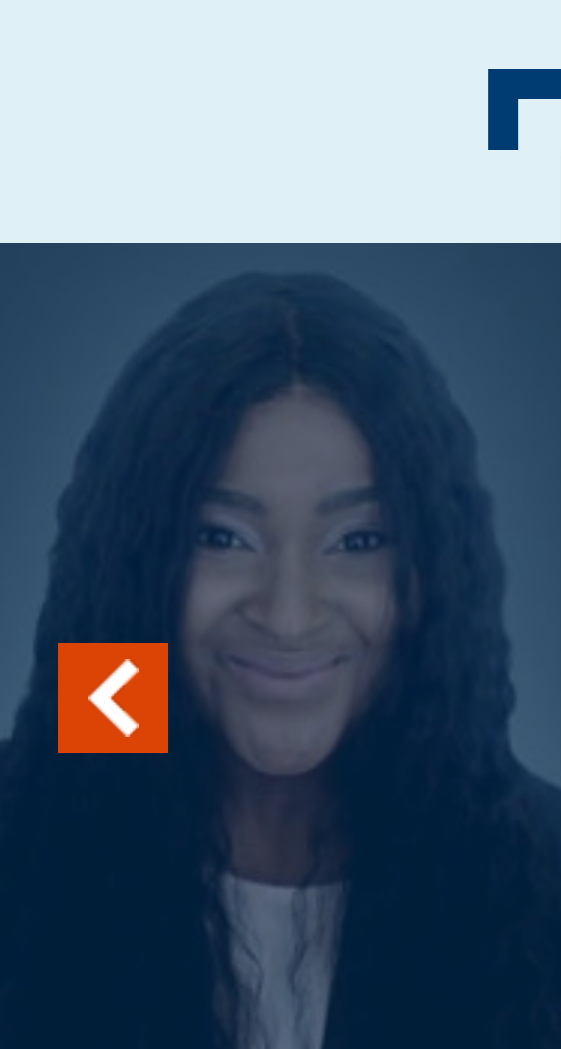
LONG-TERM DISABILITY

AUTO ACCIDENTS

WORKERS' COMP

MEET THE TEAM

The attorneys at Levine Benjamin focus on helping people like you when a health crisis leads to a money crisis.



KEEPING YOUR CASE MOVING DURING THE CORONAVIRUS

"From the beginning...to the end, I was given attention and understanding. When the time finally came for court, COVID-19, aka the coronavirus, hit us, and (we) ended up having to do a telephone hearing. Claire (the attorney) never wavered. Thank you again for...winning my case. I feel validated and heard."

— MARGARET RAMIREZ ON FACEBOOK



GET MY FREE EVALUATION!

Name*

Zip*

Age*

Email*

Phone*

Tell Us Your Situation:

START TODAY! >

